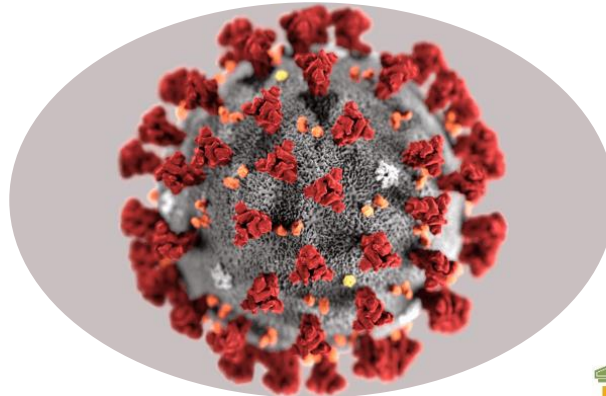


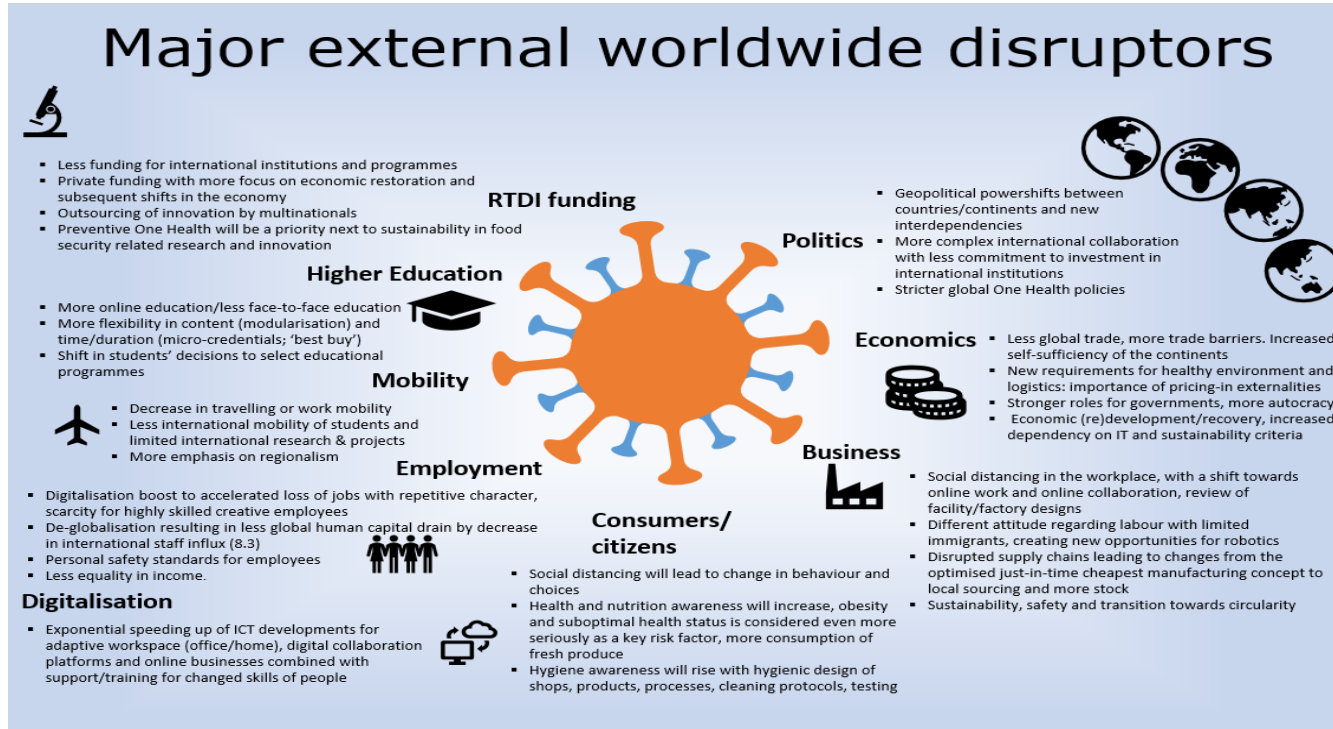
What are the medium to long term implications of Covid-19 on universities' research, innovation programmes and engagement with society, defining a roadmap forward.

Dr. Martin C.Th. Scholten
22 October 2020

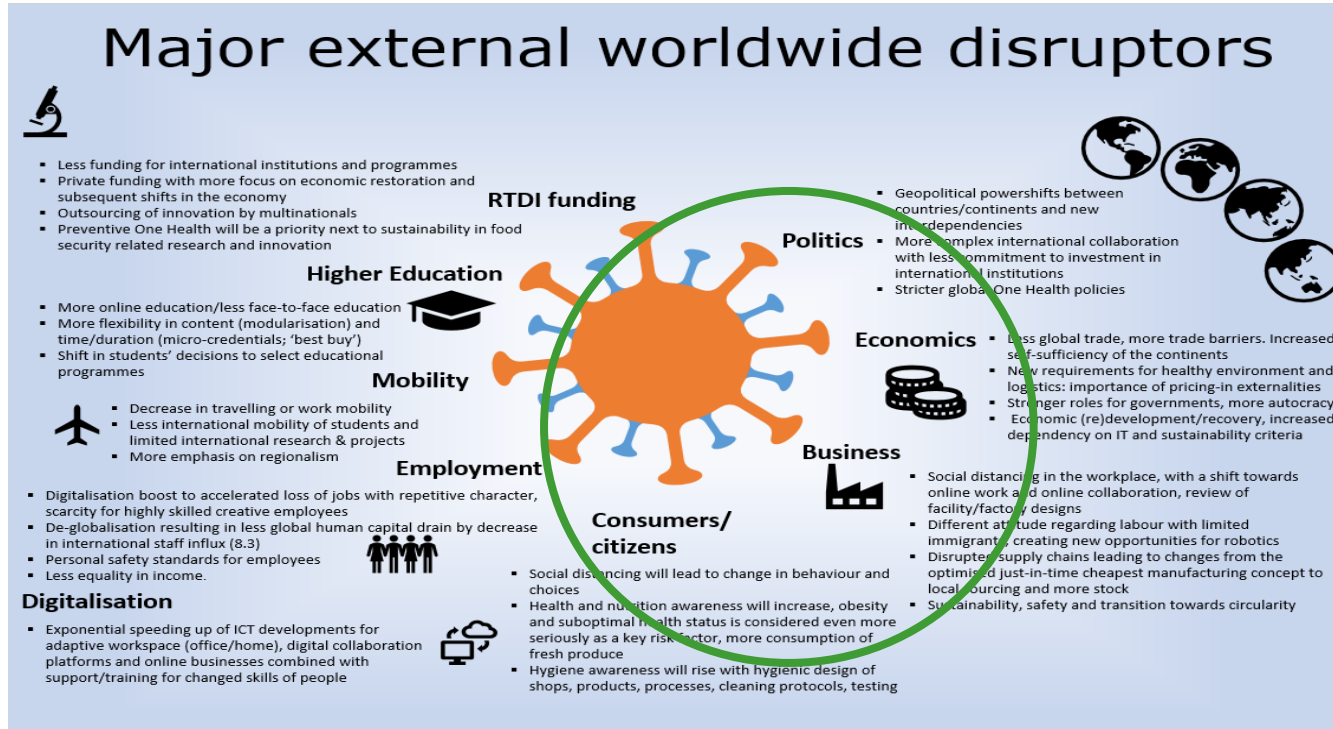
WUR-Id
after the curve



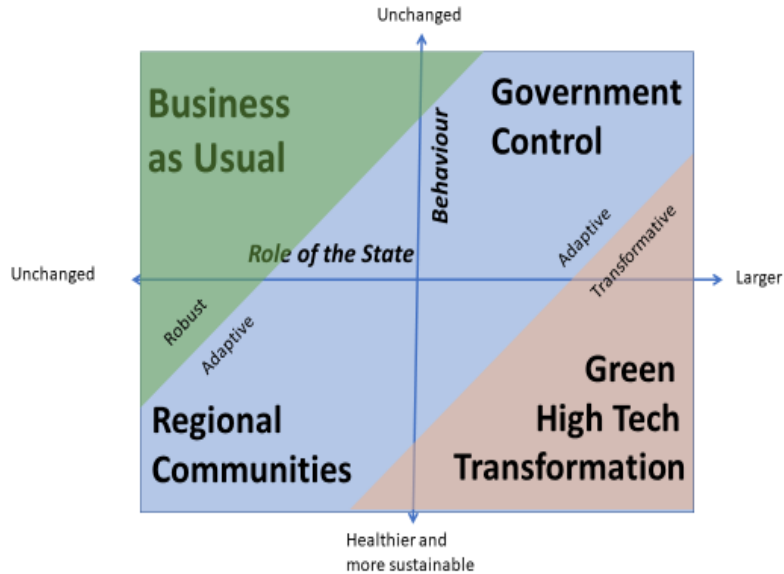
A pandemic like Covid-19 is a major disruptor



A: disrupting the outer world around science



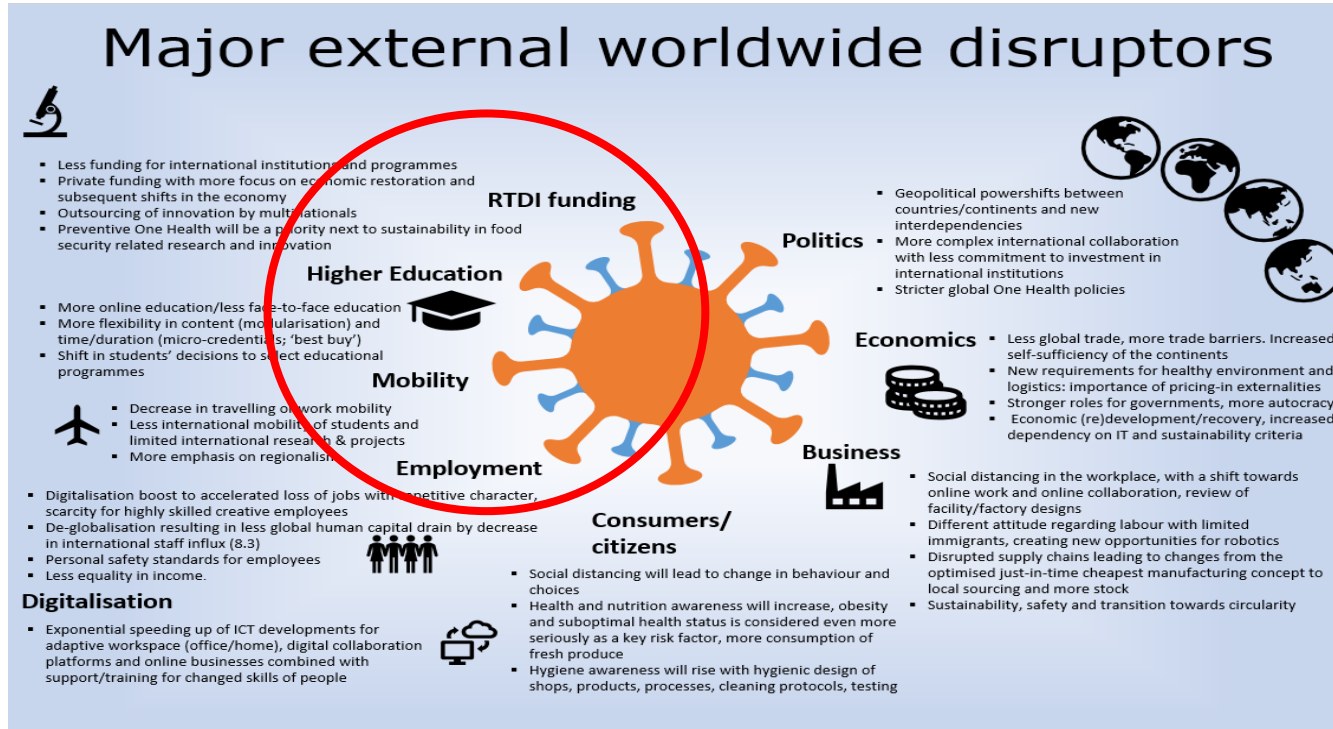
Implications for European food system scenario's



Business recovery in a free global market	Preventive governmental control
Shift towards regional business models	<i>Flipping the switch towards a radical transition by policies</i>



A: disrupting the inner world around science



Implications for Higher Education

- More online education, less face-to-face education.
- More competition for online education.
- More flexibility in content (modularisation) and time/duration (micro-credentials; 'best buy').
- Decrease in international student (and staff) influx: will take at least five years to recover.
- Shift in students' decisions on study programmes and location: to select educational programmes towards those with expected better job security with a blended mix of universities..
- More emphasis on lifelong learning and professional development.



Implications for Research

- Reduction of public budget for universities and research institutes compensate for expenses related to Covid-19 recovery.
- Stronger focus on scientific support to policies and society (mission-driven), instead of curiosity-driven and industry-driven science
- European funding will shift towards more focus on preparedness, IT and a self-sufficient and less geopolitically complex European economy
- Less funding for multilateral institutions and programmes due to lower donorship and fewer charities.
- Lower (co)funding from private parties.

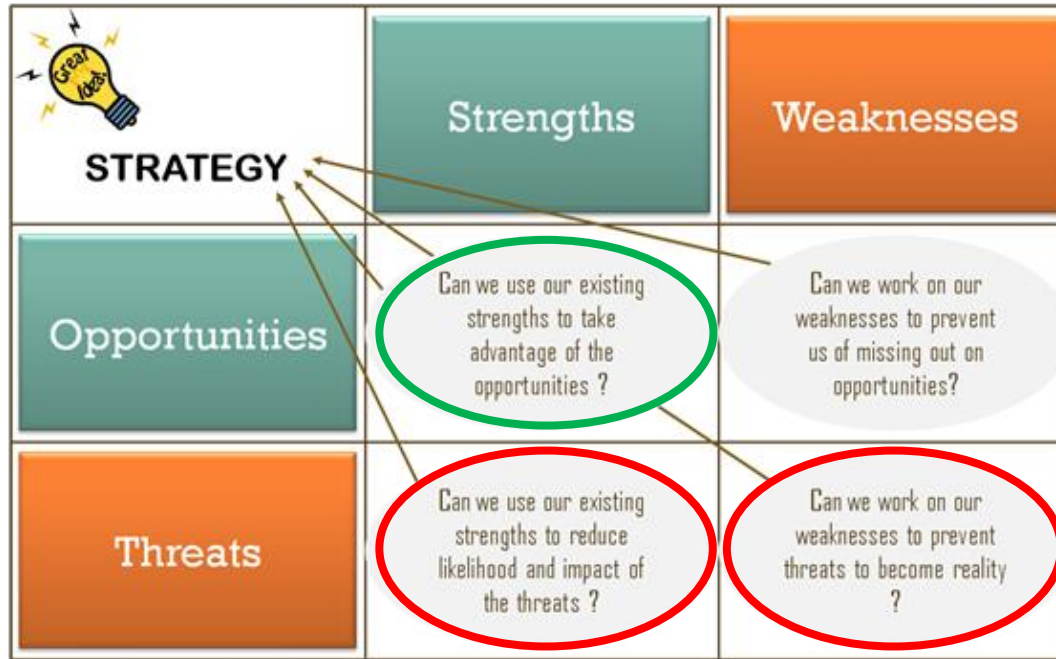


Implications for Innovation

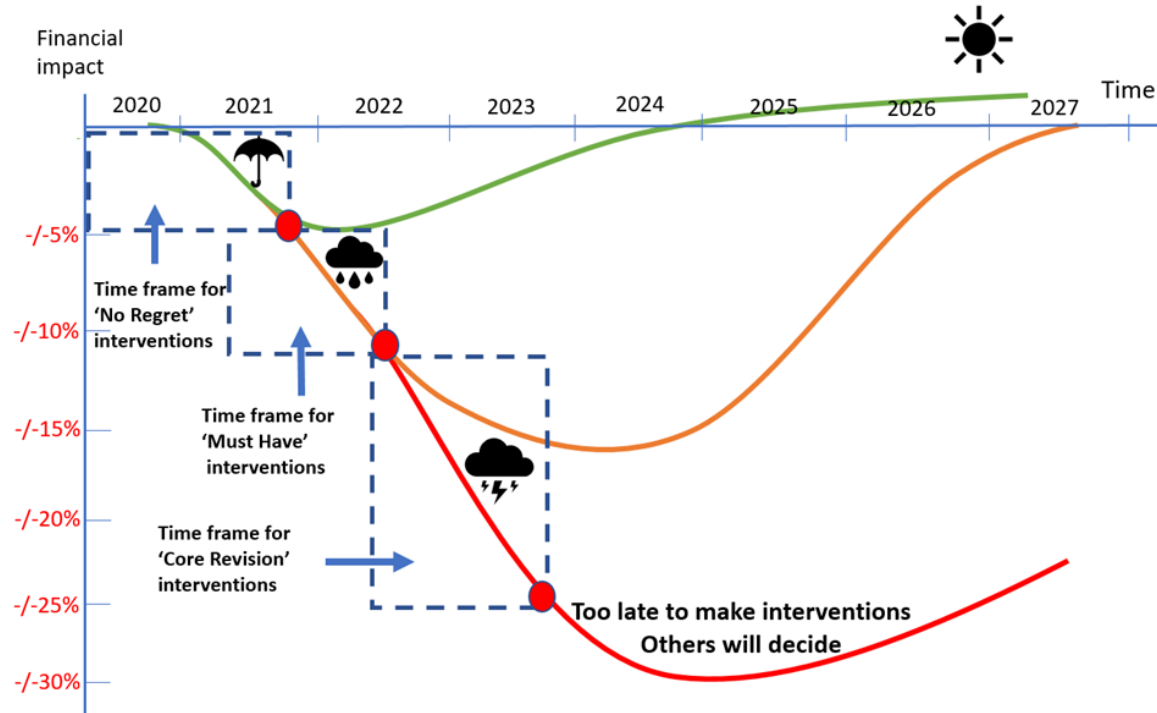
- Lower budgets for talent programmes, start ups, scale ups
- Outsourcing of innovation by medium-size multinationals.
- More need for value creation, bringing direct benefits to society and private companies.
- Private funding with more focus on economic restoration, speed to market of new innovations and subsequent shifts in the economy.



Dealing with the consequences



Covid-19 Aftermath: forecast and interventions



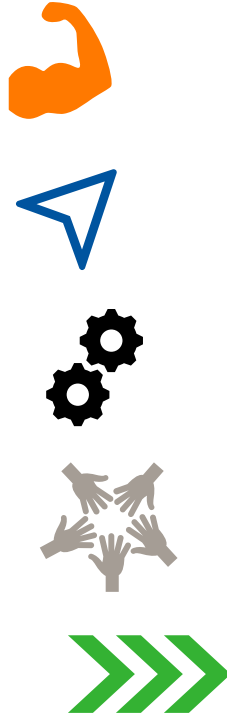
The intervention strategy of WUR

Brace for financial constraints

Expect decrease in revenues



WR & WU



Strengthen our USP: we have what it takes; strengthen our unique qualities and brand

Redirect priorities: In Education, Research and Value Creation

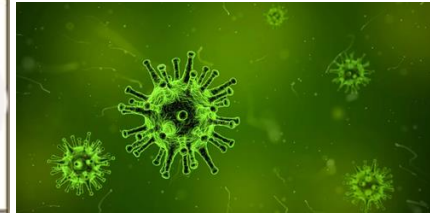
Recalibrate enablers: flexible work, campus, support, focus internal organisation

Find answers together: within WUR and with others

Act timely and decisively

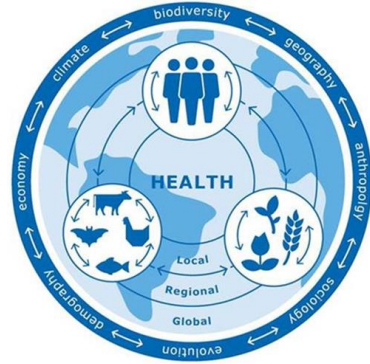


Dealing with the consequences



Emerging priorities

- ✓ Pandemic emergency preparedness & intervention
- ✓ Preventive health and lifestyle of consumers
- ✓ Food: hygiene, quality and authenticity
- ✓ Agri: resilience with more regionality of supply chains
- ✓ Climate-smart land use fostering biodiversity
- ✓ FAIR data-driven solutions with artificial intelligence



Disease X-next: Preparedness & Intervention

ZEPI: Zoonotic Emergency, Preparedness & Intervention

Early Prediction

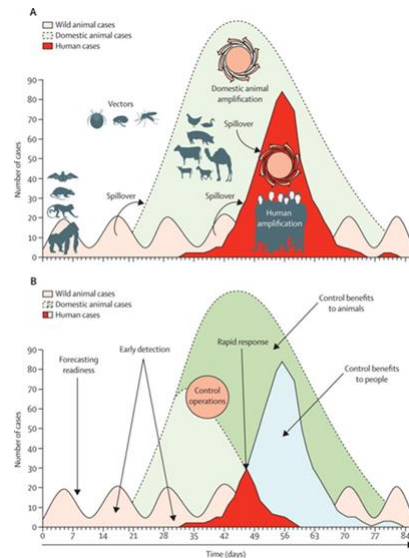
- Wildlife as zoonotic reservoirs and dispersing agents
- Zoonotic transmission and propagation in society

Preventive Intervention

- Contingency planning
- Vaccin development
- Public health care

Responsive Detection

- Early hazard identification
- Real-time monitoring
- FAIR sharing of complex data



Interdisciplinary & international connectivity needed

ZEPI: Zoonotic Emergency, Preparedness & Intervention

Early Prediction

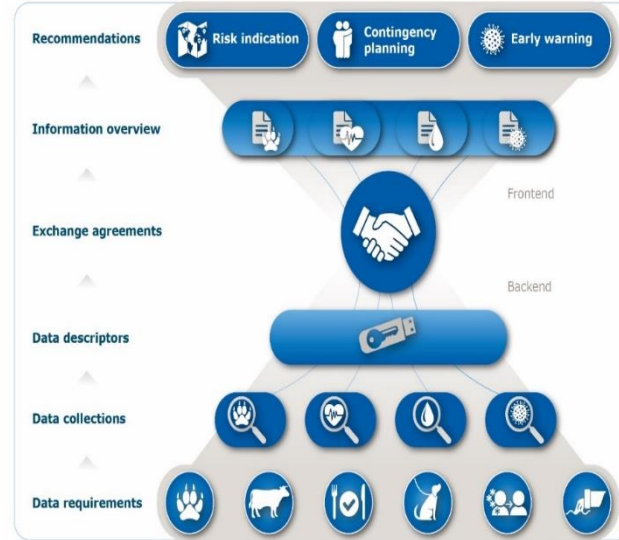
- Global mapping of potential hotspots for emergence of zoonoses
- Global monitoring of presence, transition and dispersal of zoonoses
- Geographical modelling to forecast zoonotic infections

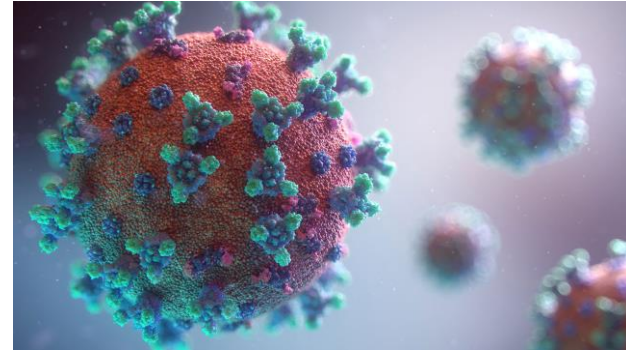
Preventive Intervention

- Sound and interconnected contingency plans
- Platforms for rapid vaccine development
- Capacity building for preparedness to intervene

Responsive Detection

- National infrastructures for data collection
- Tools for smart virome sequencing
- Toolbox for validated Point of Care Tests (PoCT)
- Integrated pandemic risk assessment models





For the Covid Aftermath

